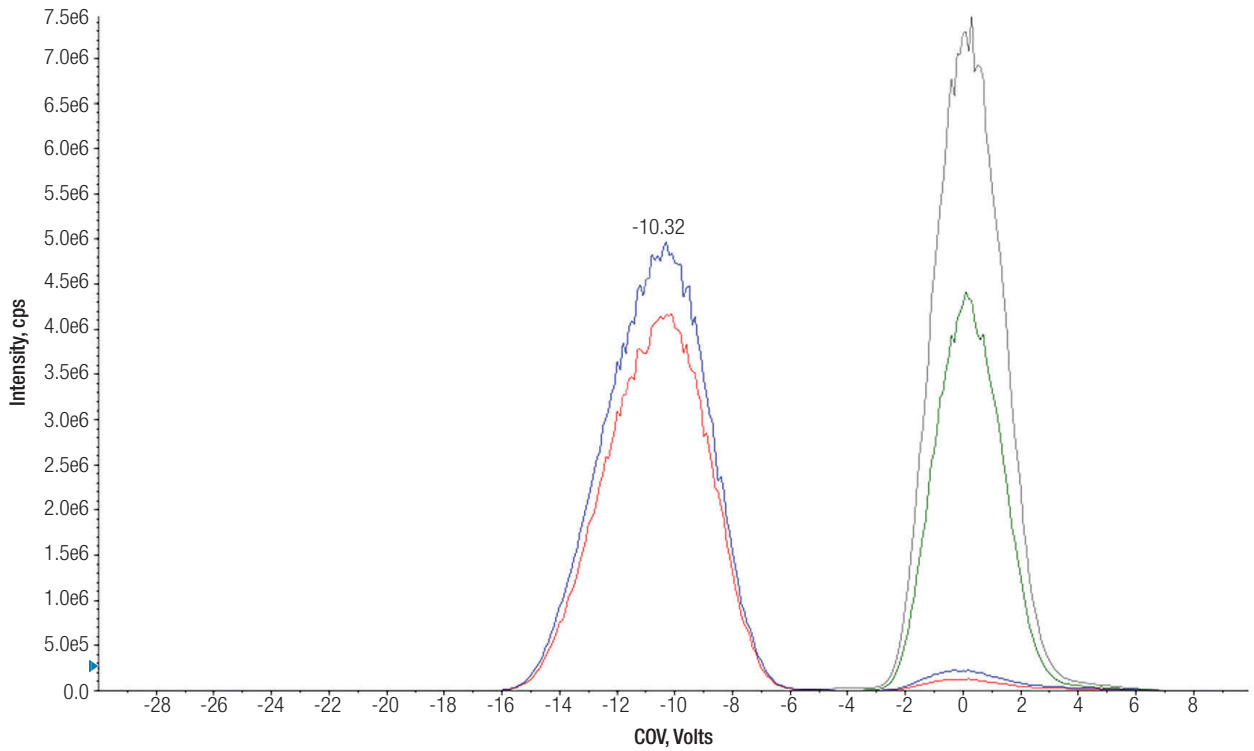


Is It Chromatographic Separation?



Scanning the compensation voltage reveals a visual of separation that can be achieved with differential mobility. The left peaks (blue and red lines) are separate transitions for mycophenolic acid. The right two peaks (gray and green) are separate transitions for mycophenolic acid glucuronide. Note the formation of mycophenolic acid in the source seen as small blue and red peaks—a known phenomenon due to source conditions. Y-axis, peak area; X-axis, compensative voltage (COV). Counts per second (cps).